

Vortibreak®

The Franklin Hodge **Vortibreak®** is a proven anti-vortex plate, designed for pump suction outlets in fire sprinkler and general water storage tanks. Tested and certified by the LPCB (UK), it ensures full compliance with **BS EN 12845**.

Vortibreak® combines certified performance, long-term durability, and cost-efficient delivery, making it the trusted choice for fire protection and general water storage systems.

⇒ Certified Performance.

The Vortibreak® anti-vortex plate is certified by the LPCB, and complies with BS EN 12845, ensuring trusted performance for fire protection and water storage applications.

⇒ Durable, Practical Design.

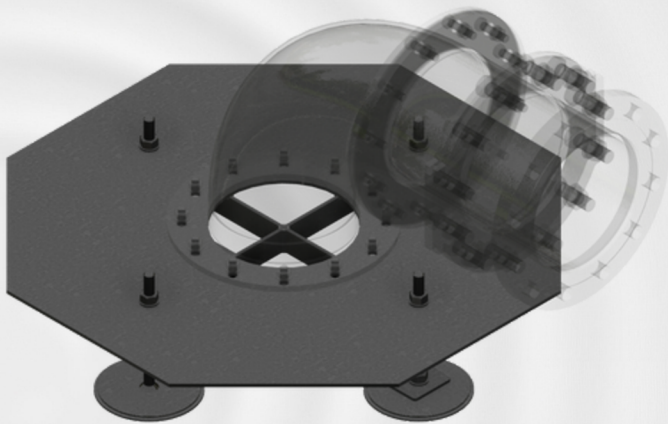
Engineered for long-term reliability, the Vortibreak® is manufactured from hot dip galvanised steel to BS EN ISO 1461, providing superior corrosion resistance in demanding environments. Its nut-and-bolt assembly design ensures simple on-site installation, reducing time and labour costs while maintaining robust performance.

⇒ Proven Track Record.

With over 30 years of successful use in water storage systems worldwide, the Vortibreak® has established itself as a trusted solution for preventing pump suction vortices.

⇒ Efficient Installation.

The Vortibreak® is designed with practicality in mind. Its flat-pack delivery not only cuts transport costs but also makes handling and storage easier, ensuring a smooth process from delivery to commissioning.



Note: Plate, suction elbow pipe and spool piece shown in image are sold separately.

Key Benefits

- **Certified reliability** – Approved by LPCB and compliant with BS EN 12845.
- **Proven track record** – Worldwide use in demanding applications.
- **Durable design** – Hot-dip galvanised steel to BS EN ISO 1461 for corrosion resistance.
- **Easy installation** – Simple nut-and-bolt assembly and flat-pack delivery for reduced transport, handling, and labour costs.

Approvals & Standards

The Vortibreak® anti-vortex plate has been rigorously tested and is fully certified by internationally recognised authorities, including the U.K. Loss Prevention Certification Board (LPCB). In addition, it complies with the requirements of BS EN 12845, giving assurance that it meets the highest standards for fire protection and water storage applications.



LPS 1276 Cert/LPCB ref 037d

Franklin Hodge Industries LTD Jubilee Building, Faraday Road,
Westfield Trading Estate, Hereford, HR4 9NS

01432 269 605

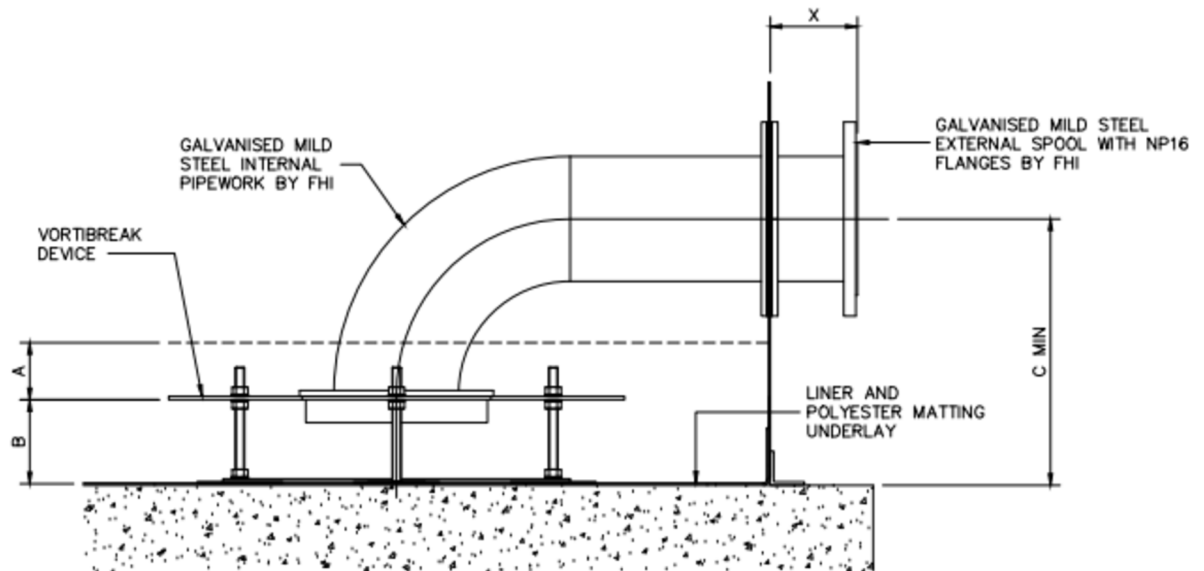
www.franklinhodge.com

sales@franklinhodge.co.uk



A member of the Carter Thermal Group

Vortibreak® Recommended Heights



BS 5306 (LPS1254)					
Ø	A	B	A+B DEADWATER	X	C MIN
100	0	100	100	150	264
150	0	100	100	150	341
200	0	150	150	150	467
250	0	150	150	150	543
300	0	200	200	200	669
350	0	200	200	200	745
400	0	200	200	200	822
450	0	225	225	200	694*

BS EN 12845 (LPS1276)					
Ø	A	B	A+B DEADWATER	X	C MIN
100	100	100	200	150	264
150	100	100	200	150	341
200	100	150	250	150	467
250	100	200	300	150	593
300	100	200	300	200	669
350	100	300	400	200	845
400	100	300	400	200	922
450	100	350	450	200	819*

FM					
Ø	A	B	A+B DEADWATER	X	C MIN
100	0	150	150	150	314
150	0	150	150	150	391
200	0	150	150	150	467
250	0	150	150	150	543
300	0	150	150	200	619
350	0	175	175	200	720
400	0	200	200	200	822
450	0	225	225	200	694*

* SHORT RADIUS ELBOW TO BE USED.